

e-TBAF FVU.exe – Readme

e-TBAF FVU.exe is a zip file containing two files namely:

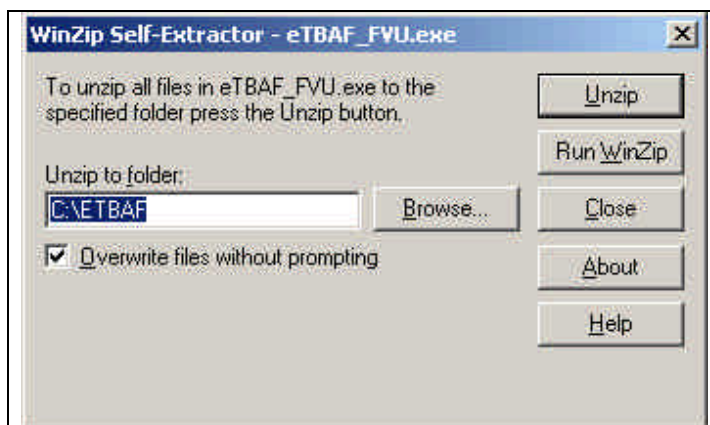
- i) **e-TBAF FVU Setup.exe**: This is a setup program for installation of FVU.
- ii) **e-TBAF_FVU_.jar** : This is the FVU program file.

These files are required for installing the e-TBAF File Validation Utility which validates quarterly e-TBAF.

Procedure for extraction of e-TBAF FVU Installable

To extract these files double-click on 'e-TBAF FVU.exe'.

A 'WinZip Self-Extractor – e-TBAF FVU.exe' will open as displayed below.



By default the path selected for extraction of two files will be 'C:\ETBAF'. The files can also be extracted in any other location (other than C:\ETBAF). In that case define appropriate path by clicking the 'Browse' button where the two files should be extracted.

Thereafter, click on 'Unzip' button.

On clicking the 'Unzip' button the two files mentioned above will get extracted to the specified path (i.e. in folder 'C:\ETBAF' by default or at the specified path).

e-TBAF FVU Setup Procedure:

1. Pre-requisite

JRE (Java Run-time Environment) [versions: SUN JRE: 1.4.2_02 or 1.4.2_03 or 1.4.2_04 or IBM JRE: 1.4.1.0] should be installed on the computer where the e-TBAF FVU is being installed.

JRE is freely downloadable from <http://java.sun.com> or <http://www.ibm.com/developerworks/java/jdk> or you can ask your computer vendor (hardware) to install the same for you.

2. Procedure to setup e-TBAF FVU

To install e-TBAF FVU click on the '**TBAF FVU Setup.exe**' icon located at the path selected for extraction of the files (if no path was specified at the time of extraction then it will be located at the default path 'C:\ETBAF').

2.1 JRE not located by 'TBAF FVU Setup.exe'



Figure 1

The '**e-TBAF Setup.exe**' will search for JRE on the computer. If it is unable to locate the JRE or JRE is not properly installed or available at the required location (Registry) then a dialogue box will open as displayed in figure 1.

2.1.1 JRE not installed on computer

If JRE is not installed on your computer then click '**Cancel**'. Install appropriate version of JRE (specified above) and try again by clicking '**e-TBAF Setup.exe**'.

2.1.2 JRE installed but not found in Registry (appropriate location)

If JRE is installed on your computer and you know the path of JRE, specify the JRE home path in the field 'Java Home Path' by either entering the path or selecting the '**Browse**' button as displayed in figure 2.

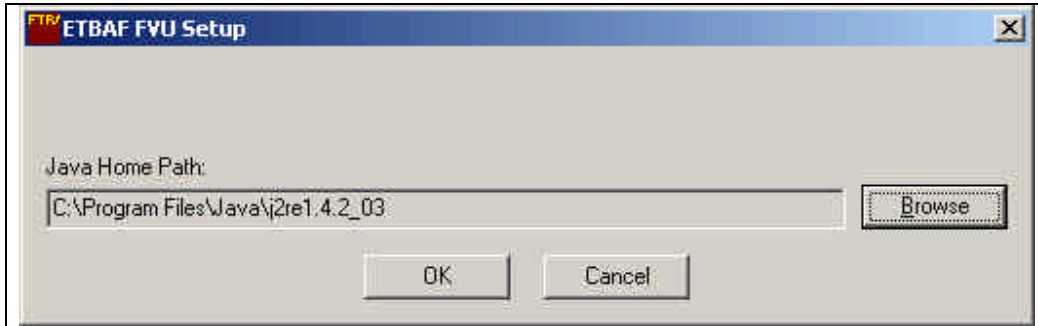


Figure 2

Thereafter click 'OK'. 'e-TBAF_FVU.bat' will be created at the location where 'e-TBAF Setup.exe' is present.

Note: 'e-TBAF_FVU.bat' will be created even if incorrect JRE home path is given or path specified even if JRE is not installed.

2.2 JRE found by 'e-TBAF FVU Setup.exe'

If appropriate version of JRE is found on the computer then on clicking 'e-TBAF FVU Setup.exe' a 'e-TBAF_FVU.bat' file will be created at the location where 'e-TBAF FVU Setup.exe' is present.

3. How to run the e-TBAF FVU

To run the 'e-TBAF FVU' click on the 'e-TBAF_FVU.bat' file. If JRE is not installed on the computer then on clicking 'e-TBAF_FVU.bat' a dialogue box as displayed in figure 3 will open. In such cases install JRE and try again.



Figure 3

If appropriate version of JRE is installed then the 'e-TBAF FVU' will be displayed (figure 4).

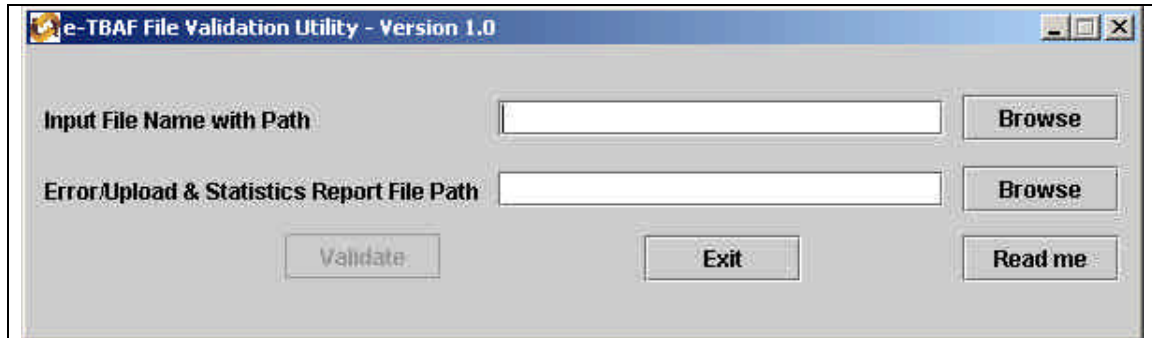


Figure 4

Before validating the electronic statement through the e-TBAF FVU read the instructions provided in 'Read me' in the e-TBAF FVU.

The 'e-TBAF FVU Setup.exe', 'e-TBAF_FVU.bat' and 'e-TBAF_FVU_STANDALONE.jar' files should be present in the same folder to run the FVU.